

SHEA'S SUMMER MUSICAL THEATRE INTENSIVE

Alejandro Gómez

Camp Director



Alejandro is an Artie-nominated performer (*In The Heights*, *Desde El Puente: Musical Edition*, *West Side Story*, *Bloom*) from Buffalo, NY and an ensemble member of Raíces Theatre Company. He has worked at numerous professional theatres in the area including MusicalFare Theatre, Kavinoky Theatre, Irish Classical Theatre, Road Less Traveled Productions, and many more. Since 2021, Alejandro has been a lead teaching artist at Shea's Performing Arts Center and just completed a degree in Theatre with a minor in Television and Film Arts at Buffalo State University.

SHEA'S SUMMER MUSICAL THEATRE INTENSIVE

Anika Pace

Cast Director



Anika Pace (She/Her) is a Buffalo native and holds a BFA in Theatre Performance and a minor in American Sign Language and Deaf Studies from Niagara University. Some of her regional credits include: Nettie in *The Color Purple* at Shea's 710 Theatre, Ann Johnson in *African Company Presents Richard III* at Ujima Theatre, May in *Junie B. Jones* at Batman Smells at TOY Theatre and Zoe in *The Niceties* at Second Generation Theatre. Anika would like to thank God and her tribes for their endless love and support.

FB: Anika Pace , IG: theanikapace

SHEA'S SUMMER MUSICAL THEATRE INTENSIVE

Anne Gerace
Cast Stage Manager



Anne is a junior at Buffalo State University, majoring in Writing & Theatre Arts, and is the President of Casting Hall Productions. Over her 5+ years of theatre experience, Anne has worked both on and off stage as an actor, singer, set builder, and stage manager. She has worked with Shea's AE&E as a teaching artist for summer camps and creative assistant for the STAGE program. This December, she will be making her professional acting debut in CARRIE THE MUSICAL (Sue Snell) with Bellissima Productions.

SHEA'S SUMMER MUSICAL THEATRE INTENSIVE

Caleb Gould
Cast Stage Manager



Caleb Gould has enjoyed the opportunity to be a part of SSMTI this year. Caleb recently graduated from Liberty University with a BFA in Acting and a Minor in Youth Ministry. Some of Caleb's performance credits include D'Artagnan (The Three Musketeers), Romeo (Romeo and Juliet), Reverend John Hale (The Crucible), and Nick Bottom (Something Rotten). Caleb has extensive stage combat and fight choreography experience. Caleb is also a Jimmy Awards Alumni after receiving the Kenny Award for Outstanding Lead Actor in 2021. Enjoy the show and God Bless!

SHEA'S SUMMER MUSICAL THEATRE INTENSIVE

Christopher Kelly

Guest Artist



Chris has worked as an actor, director and educator for the last 30 years. Recent directing credits include Alley of The Dolls (BUA), Something Rotten (MusicalFare), The Hobbit (Theatre of Youth), Dracula: A Comedy of Terrors (Irish Classical Theatre) and Romeo and Juliet (Shakespeare in Delaware Park). He holds two Buffalo Spree Best of Buffalo awards for his direction of The Drowsy Chaperone (MusicalFare) and for acting in ICTC's The Beauty Queen of Leenane. Chris has had the good fortune of winning Artie awards for directing, acting and writing. He has worked part time as the Drama teacher at Global Concepts Charter High School, and taught workshops classes at TOY, for the past 10 years.

SHEA'S SUMMER MUSICAL THEATRE INTENSIVE

Cristalis Bonilla

Cast Director



Cristalis Bonilla is thrilled to be returning to SSMTI for a third year. This is her first time directing for the camp after serving as a stage manager for many years. She graduated from Buffalo State University in 2019 with a BA in Theatre Arts. Cristalis has acted in many film projects such as *A Quiet Place 2* and *Resident Evil: Rebirth*. Locally, she has been an Assistant Stage Manager for many shows at Road Less Traveled Productions.

SHEA'S SUMMER MUSICAL THEATRE INTENSIVE

Ethan Smith

Cast Stage Manager



Ethan Smith is so happy to be back for his fourth year working with Shea's AE&E summer programming. He has previously served as a Stage Manager for SSMTI and Actor's Edge. Ethan currently studies English Education and Writing at SUNY Fredonia University. Love to Mom, Dad, and Mason.

SHEA'S SUMMER MUSICAL THEATRE INTENSIVE

Gianna Gould

Assistant Choreographer



Gianna is thrilled to be back for her third year as the Assistant Choreographer at SSMTI. She recently graduated from Liberty University with a Bachelor of Science in Theater Arts: Production and Design. She was recently the Stage Manager for Liberty University's productions of Jane Eyre the Musical and The Sound of Music. Following SSMTI, Gianna will be stage managing Alluvion Stage Company's production of Into the Wood. She would like to thank everyone involved with putting SSMTI together!

SHEA'S SUMMER MUSICAL THEATRE INTENSIVE

Grace Galipeau

Cast Director



Grace is so excited to join SSMTI once again as a director for her fourth year! She is a performer based in Buffalo and is about to graduate from the BFA Acting program at SUNY Fredonia University. Some recent notable stage credits include Company (Kathy), The Book Women (Betty, Thelma, Willy), and Sister Act (Michelle). Be sure to catch Grace this July as Nicola in Kinky Boots at the Historic Palace Theatre!

SHEA'S SUMMER MUSICAL THEATRE INTENSIVE

Jackie Gould

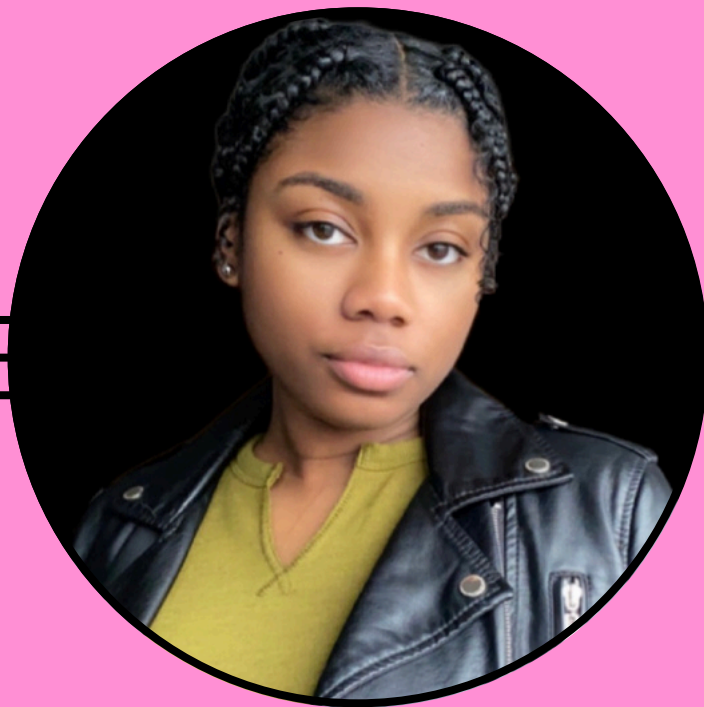
Choreographer



Jackie Gould has been a Director, Choreographer, Vocal and Drama Coach for the past 25 years for both High School and Elementary School productions in several area WNY School Districts, including Hamburg Central Schools, where she is a full time teacher. She has three music degrees from SUNY Fredonia, including a Masters in Vocal Performance. Musical theater has been a big part of her family, with two of Jackie's children now majoring in theatrical arts in college. She is thrilled to be a part of this program that continues investing in the next generation of young artists.

SHEA'S SUMMER MUSICAL THEATRE INTENSIVE

Janaé Leonard
Cast Stage Manager



Janaé Leonard is a passionate performer with a dynamic range of stage and screen experience. She has appeared in productions such as *Head Over Heels*, *Rent*, *American Idiot*, and *Between The Lines* (Bellissima Productions), *Beautiful, Crowns*, and *Waitress* (MusicalFare), *Goodnight, Tyler* and *Cullud Wattah* (Ujima). Her work extends to film & tv, including: *DATING* (Black Script Productions), streaming on Amazon Prime Video, and *Brok'n Love*, which premiered in Buffalo in February 2025. She also starred in the short film *Line of Sight* (Expressed Entertainment) for The 48 Hour Film Project. Most recently, she's thrilled to begin a new chapter as a Stage Manager with Shea's Summer Musical Theatre Intensive (SSMTI). Janaé gives thanks to God first and always, and she deeply appreciates the love and support of her family, friends, and creative community.

SHEA'S SUMMER MUSICAL THEATRE INTENSIVE

Maria Crisafulli

Music Director & Pianist



Maria Crisafulli is excited to be working with Shea's Summer Musical Theatre Intensive again this year after serving as accompanist and music director last year. She is currently a music teacher at Veronica E. Connor Middle School on Grand Island, specializing in 7th and 8th grade chorus and 8th grade general music. Maria studied Music Education with a concentration in piano at SUNY Fredonia University with her piano professor, Mary Cobb. She looks forward to being a part of this program!

SHEA'S SUMMER MUSICAL THEATRE INTENSIVE

Moriah Armstrong

Cast Director



Moriah is so excited to return to SSMTI for a second year after serving as a stage manager last year. She graduated with her Theatre Performance BFA at the University at Buffalo, and is currently pursuing her MA in Theatre Arts Administration. Her recent credits include Directing PUFFS! at the University at Buffalo, Eurydice in Eurydice (Irene Ryan Acting Nominee), Dotty Otley in Noises Off! (Irene Ryan Acting Nominee), and Maria in Twelfth Night.

SHEA'S SUMMER MUSICAL THEATRE INTENSIVE

Paige Suarez
Cast Stage Manager



Paige is a 2025 Buffalo State Theatre major graduate! Recent productions at Buffalo State include Ride the Cyclone (Constance Understudy) and Little Shop of Horrors (Ronette). When she isn't on stage she is always helping behind the scenes with costumes and quick changes! This is her 3rd summer as a stage manager with SSMTI and she is looking forward to meeting and working with all the new and returning young actors/actresses to bring their creative ideas to life!

SHEA'S SUMMER MUSICAL THEATRE INTENSIVE

Patrick Burke

Cast Director



Patrick Burke is a physical theatre maker, immersed in the realms of clown, commedia and Lecoq performance techniques. They received their MFA in Devised Performance at UArts and the Pig Iron Theatre school, as well as a BA in Theatre Arts and Criminology at Le Moyne College. He uses this foundation of pedagogy in his work as a teaching artist. Recently, they premiered their solo storytelling show, Thawing, at the Hamilton Fringe Fest and Philadelphia Fringe Festival. An active member of the Philadelphia Puppet Guild, Patrick can regularly be found making his audiences fall in love with felt in coffee shops and yoga studios scattered around the city of brotherly love. Lastly, he sincerely hopes you'll say hello after seeing him performing this season with Shakespeare in Delaware Park's touring production of Romeo & Juliet.

SHEA'S SUMMER MUSICAL THEATRE INTENSIVE

Philip Farugia

Composer



Philip is an accomplished actor, musician, composer and educator. He is the choral director at West Seneca East High School and has enjoyed being a part of SSMTI since 2020. As a composer, Philip has written music for the stages at MusicalFare, Road Less Traveled Productions, The Alleyway, Second Generation Theatre, Theater of Youth and Shakespeare in Delaware Park. Philip is also an Artrie Award winning actor and a sought after music director. Favorite local productions include ONCE, ASSASSINS, MURDER FOR TWO, RING OF FIRE and WEST SIDE STORY.

SHEA'S SUMMER MUSICAL THEATRE INTENSIVE

Ricky Needham

Cast Director



Ricky is thrilled to be returning to camp this year for a second summer in a row! He is an Artie-Award-winning actor with a BA in Theatre from SUNY Buffalo State Univeristy. He's also studied at The Second City in Chicago, IL. Notable past professional show credits include Rock of Ages (Kavinoky Theatre), Something Rotten (MusicalFare Theatre), Big Fish (Second Generation Theatre), West Side Story (MusicalFare Theatre), and many more. He is eager to see what this year's group of fabulous performers bring to the Shea's stage!

SHEA'S SUMMER MUSICAL THEATRE INTENSIVE

Riley Dungan
Cast Stage Manager



Riley is a theatre artist and practitioner born and raised in Buffalo. He is an audience services coordinator at Shea's Buffalo Theatre during the Broadway Season, and this is his fifth summer as a teaching artist at this camp. For that, he is incredibly grateful for the Arts Engagement and Education department for believing in him. Riley is also the house manager at Road Less Traveled Theater down the street. He recently completed his M.A. in Arts Management this past May from the University at Buffalo, and received a B.A. in Theatre with an English minor there in 2022 as well. Be sure to say hello to him in the merchandise booth at the top of the hill during Shakespeare in Delaware Park's upcoming production of "Richard III". Keep the magic of theatre alive!